



ORACLE



March 2007
Volume 35 Number 3
District 2, Chapter 1
© Copyright 2007 SOLE

Chair Talk

Greetings Fellow GWAC Members and Logisticians! This issue of the GWAC ORACLE Newsletter includes information about upcoming events; Chapter Officer reports; Management Team meeting minutes; an article on *Operational*



Logistics, minutes from the 11 March District 2 Meeting, a notional election ballot for 2007–2008, call for awards flyers, info on SOLE 2007, an announcement Flyer for the March GWAC luncheon and more. . . .

2007-2008 GWAC Elections

Please see the notional 2007-2008 GWAC Election Ballot on page 12. Two of our Management Team members will not be running for office next year - B.J. Silvey for VC Finance and Gary Glick, CPL for VC Education. B.J. has been taking on more commitments in a volunteer organization that conflicts with his GWAC duties and Gary has accepted a new job in Centerville that makes it too difficult for him to attend GWAC meetings and luncheons. Mr. Tom Lorenzo has already placed his name on the ballot for VC Finance but the VC Education position is wide open. Please understand that you can nominate yourself to compete for any position and be put on the ballot, but the VC Education position is uncontested. This would be an excellent opportunity for you to step up and get more involved with GWAC and SOLE -The International Society of Logistics. Also, consider putting your name in for one of two openings with the GWAC Management Team Advisors.

SOLE 2007 Awards

Please consider nominating yourself, a co-worker, a boss, an employee or a customer for a SOLE Award. Page 8 has a listing of the

SOLE Awards. In particular, I draw your attention to the SOLE Field Award described on page 9. You do not have to be a member of SOLE to receive this award and it can apply to any number of logistics disciplines. If you have questions or need assistance in preparing a nomination package, please contact me for assistance at (703) 526-2437 or at floyd_david@bah.com.

March GWAC Luncheon

GWAC will be holding our 28 March luncheon at the Logistics Management Institute (LMI) offices in McLean, VA. The guest speakers are Mr. Rob Kline and Mr. Dave Peterson from LMI. The topic is Reliability Based Sparing. The only cost of the luncheon is a pay-as-you-go buffet luncheon from the LMI cafeteria. See the Flyer on pg. 9. To RSVP contact: bunnystreet@yahoo.com.

Inside this Issue

<u>Title</u>	<u>Page</u>
Front Page – Chair Talk	1
Upcoming Events.....	2
Vice Chair Reports.....	3
Management Team Meeting Minutes...	4
GWAC Luncheons and SOLE 2007.....	5
Operational Logistics Article.....	6
District 2 Meeting on MAL 2008.....	7
SOLE 2007 Awards Announcement.....	8
SOLE 2007 Field Award Info.....	9
SOLE LEF Scholarship Info.....	10
GWAC Chapter Nominations Info.....	11
GWAC Notional Ballot.....	12
March Luncheon Flyer.....	13
Directions to Luncheon.....	14

Chapter Officers

Chair	
Dave Floyd, CPL	703-526-2437
Immediate Past Chair	
Lyle Paulson, CPL	571-352-2573
Vice-Chair, Admin	
Mary Johnston	202-646-5518
Vice-Chair, Finance	
B.J. Silvey	703-860-5141
Vice Chair Member Services	
Tom Griffiths	703-383-3150
Vice-Chair, Professional Development	x325
Ron Hooks	202-475-3135
Vice-Chair, Education	
Gary Glick, CPL	703-697-4271

Advisory Members

Joyce McCallister, PMP, CPL	703-217-8431
Richmond Miller, CPL	202-314-1149
Ken Gary	703-692-5920
Dev Raheja	301-483-4525
Lorenzo Thomas	

Committee Chairs

<u>CPL Coordinator</u>	
Gary Glick, CPL	703-697-4271
<u>Education</u>	
Dr. Lloyd Muller, CPL	703-751-1060
<u>Elections</u>	
Tom Griffiths	703-383-3150
<u>Historian</u>	
Dave Floyd, CPL	571-218-3248
<u>Job Referral</u>	
Lorenzo Thomas	
<u>Logistics Education Foundation</u>	
Dave Floyd, CPL	571- 218-3248
<u>Membership</u>	
Tom Griffiths	703-383-3150
<u>Award Nominations</u>	
Mary Johnston	202-646-5518
<u>Oracle Newsletter Editor</u>	
Dave Floyd, CPL	571- 218-3248
<u>Public Relations</u>	
Dave Floyd, CPL	571-218-3248
<u>Retail Sales</u>	
BJ Silvey	703-860-5141
<u>Training</u>	
Gary Glick	703-697-4271
<u>DCCEAS Delegate</u>	
Dev Raheja	301-483-4525
<u>Webmaster</u> Lorenzo Thomas	

The ORACLE

The ORACLE is published 12 times a year. The deadline for articles and announcements is the second Monday of the month to be published. Authors, please reference "Editorial Objectives and Guidelines" under the "ORACLE Newsletter" Link at www.gwacsole.org for more details. GWAC assumes no responsibility for statements made by advertisers or for statements of fact or opinion expressed or implied in this publication.

Upcoming Events

April 3–4, 2007 Department of Defense (DoD) Radio Frequency Identification (RFID) Summit, Washington, DC. Contact www.dodrfidsummit.com.

April 10, Site Tour of FedEx Dulles with presentation on Supply Chain Management Issues with the U.S. Government. Hosted by the Council of Supply Chain Management Professionals (CSCMP). Contact leslie.downey@RFIDRevolution.com.

April 30 - May 1, 2007 Supply Chain Management Seminar, Washington, DC. Contact www.technologytraining.com.

April 30 - May 1, 2007 Systems of Systems Engineering Seminar, Washington, DC. Contact www.technologytraining.com.

May 3- 4, 2007 Lean Six Sigma, Washington, DC. Contact www.technologytraining.com.

May 7- 9, 2007 ILS for the 21st Century Seminar, Washington, DC. Contact www.technologytraining.com.

May 15 -16, 2007 Performance Based Logistics Seminar, Washington, DC. Contact www.technologytraining.com.

Financial Report

by BJ Silvey at
silveybjmarbj@comcast.net
 As of 28 February, 2007
 Beginning Balance: \$5969.79

Income: Luncheon
 Total Income: \$0.00

Expenses: (\$50.00)

Total Expenses: (\$50.00)

Ending Balance: \$5919.79

VC Programs

by Ron Hooks, PMP, at
hooks_ron@bah.com

Dr. Mark McHenry, President Shared Spectrum Company was the speaker at our February luncheon. The topic was Next Generation (NX) Dynamic Spectrum Sharing Radios

VC Technical

By Gary Glick, CPL at
glickg@starpower.net

CPL Exam Update

The next CPL Exam will be held the first Saturday in May. Applications to take the May CPL Exam were due by 1 February 2007. For more info check out the Certification section on the SOLE Web site at www.sole.org.

SOLE Searchers

Check out the updated "Jobs" page hyperlink at the GWAC Web site at www.gwacsole.org. or contact Tom Griffiths at 703-383-3150 x325.

DCCEAS

The DCCEAS National Engineers Week

Committee Report was as follows: Dr. Mark McHenry was the luncheon speaker and Mr. Mark Uhan, Assistant Associate Administrator for the International Space Station (ISS) was the dinner speaker.

The Engineers & Architects Day Luncheon, was held Wednesday, February 21, 2007 at the Pier 7 Restaurant in DC. The Awards Banquet, was held February 24, 2007 at the Crowne Plaza Hotel in Silver Spring, MD. The Banquet had a cash bar. Inclusion of the center pieces for the tables was in the contract. Society Delegates were asked reserve the tables as soon as possible.

Chapter Website

Contact our new webmaster at webmaster@gwacsole.org with your comments and/or input. Files added during the last month to the functional areas include the following:

General.

- February Management Team Meeting Agenda and Minutes
- Updated Calendar of Events

Administration.

- Membership Spreadsheet, Password protected (contact_webmaster@gwacsole.com)
- February ORACLE Newsletter

Finance.

- February Financial Report

Chapter Events List 2007-2008

<u>Date</u>	<u>Event</u>
Mar 28	GWAC Luncheon
<u>April 11</u>	GWAC BoD Meeting
April 25	GWAC Luncheon
<u>May 14</u>	GWAC BoD Meeting
May 23	GWAC Social
May 30	GWAC Luncheon

GWAC Management Management Team Meeting Minutes

CALL TO ORDER:

Chair Dave Floyd, CPL, called the meeting to order at 5:45p.m. on 13 March, 2007 at the Hamburger Hamlet restaurant in Crystal City, Arlington, VA.

CHAPTER OFFICERS PRESENT:

Dave Floyd, CPL	Chapter Chair
Lyle Paulson, CPL	IPC
Gary Glick, CPL	VC Education
Mary Johnston	VC Admin
Lorenzo Thomas	Board Advisor
Dev Raheja	Board Advisor

OLD BUSINESS:

Past Minutes. The GWAC Management Team reviewed and recommended approval of the February 2007 Management Team Meeting minutes and Financial report for the month of February.

VC/COMMITTEE REPORTS:

VC FINANCE:

The GWAC financial balance was a decrease of \$50 to \$5919 from the previous month. The amount reflected mostly extra expenses for seating 12 at a table for 10 at the February 21 DCCEAS/GWAC luncheon.

VC MEMBER SERVICES:

Lorenzo Thomas reported that he had updated the GWAC Web site to reflect activities that had occurred in February.

VC PROGRAMS:

March Luncheon Speakers. Rob Kline and Dave Peterson from LMI will be speaking on Reliability Based Sparing at LMI spaces in McLean starting at 1130 on 28 March, 2007. The cost of the luncheon is free except for the pay as you go cafeteria luncheon.

VC ADMINISTRATION:

Our VC Administration, Ms. Mary Johnston, is back in action after recovering from sur-

gery. Any first time attendees at SOLE luncheons are free (except for the Awards Luncheon).

VC EDUCATION:

Gary Glick, CPL mentioned that because his new job in Centerville was too far away, he felt that he would not be able to attend GWAC luncheons and Management Team Meetings. He said it would be best if GWAC could find a replacement for him as VC Education. Chair Dave Floyd, CPL said he would seek a replacement but asked Mr. Glick, CPL to stay on as CPL Coordinator which Gary agreed to do. The next CPL Exam will be held the first Saturday in May. So far two individuals have expressed interest in participating in a GWAC CPL Study Group. Unless others express interest, this does not meet the number of 10 needed to start the group. Chair Dave Floyd, CPL offered to contact the individuals to suggest that in the two interim they submit applications to become Designated Logisticians. For info about the Designation Logistician and CPL Programs check out the Certification section on the SOLE Headquarter's Web site at www.sole.org.

NEW BUSINESS:

Chair Dave Floyd, CPL briefed the Management Team about the District 2 Meeting which was held on 10 March (see the meeting minutes on page 7). Ms. Mary Johnston is still aggressively pursuing input for our GWAC Chapter Award submission. She is continuing to bug Management Team members to submit their End of Year Reports. Mr. Lyle Paulson, CPL, former GWAC Chair and current Vice President for Member Services at SOLE—The International Society of Logistics, has found a new job within his company.

ADJOURNMENT:

There being no further discussions, Chair Dave Floyd, CPL, adjourned the meeting at 7:10 pm. The next board meeting will take place at the Hamburger Hamlet Restaurant in Crystal City on 11 April vice 9 April 2007. GWAC members are most welcome to attend as guests

GWAC LUNCHEONS

SOLE 2007

Beginning this past January and scheduled through May, the Greater Washington Area Chapter (GWAC) of SOLE - The International Society of Logistics has worked with area companies to host our monthly luncheons at their offices. We've started doing this for several reasons: to encourage other members to attend our luncheons beyond the regular cadre of management team members that attend every month, give area logisticians an opportunity to meet and network with peers from other companies, and to give everyone a chance to become more familiar with other companies in the area doing similar work and the services they provide.

So far we have held or are planning luncheons at:

- Booz Allen Hamilton (Crystal City) – Introduction to PBL by Mr. Jim Beggs
- Luncheon with DCCEAS in honor of National Engineers Week (Washington, DC)
- Logistics Management Institute (McLean Office) – Reliability Based Sparing
- Booz Allen Hamilton (McLean) – Leaning Out Logistics by Mrs. Jenny Wydler
- Booz Allen Hamilton (Rosslyn) – Intermodal Commerce (planned)

We would like to extend the opportunity to other members and their companies to host luncheons later in the year. Currently, we have openings for June - Aug, and November.

Locations should be within the Washington Metropolitan area, a relatively easy commute, accessible by non-cleared individuals, with a meeting/conference room available that can seat up to 30 people.

We look forward to a growth in participation from area logisticians and the chance to meet others with similar backgrounds. If interested, please call Ron Hooks at (703) 526-2482 to discuss proposed topics and other details.

SOLE 2007 will take place 23-25 August at the William Penn Hotel, Pittsburgh, PA. The Conference theme is “*Logistics: The Keystone of Mission Success*”. The Keynote speakers are Mr. Ken Krieg (Under Secretary of Defense for AT&L), and LTG (Ret) Mike McDuffie. Mr. James D. Hall, Assistant Deputy Under Secretary of Defense (Logistics Plans and Studies) has again agreed to serve as the Defense Technical Chair. LTG (Ret) Mike McDuffie, Vice President, U.S. Public Sector Service, Microsoft Corporation, has tentatively agreed to serve as the Industry Technical Chair. The format of the Conference consists of Plenary and Panel discussion sessions with some speaker presentations included.

Day 1 is devoted to the Defense Logistics Theme: “The Human Element of Transformation”.

Day 2 is devoted to the Space Logistics Theme: “Space LogOps”.

Day 3 is devoted to Humanitarian and Disaster Relief (H&DR). The Theme is: “*Logistics: The Heart of H&DR Operations.*”

The General Chair for SOLE 2007 is Mr. John (Jay) Erb.

For more information, contact SOLE at www.sole.org and click on “Annual Conference”.

***Access the Greater
Washington Area Chapter
(GWAC) of SOLE –
The International Society of
Logistics Website at
www.gwacsole.org***

ARTICLE

Logistics Stuff—Five Things to Consider

1. The operations/logistics partnership is a target for our enemy - protect it. We always must try to think of an enemy's looking for the decisive points in the partnership. What we want to make strong, they will try to weaken. Where we want agility, they will want to paralyze us. What we can do to our enemy, we can do to ourselves by lack of attention. So all concerned with operations and logistics must protect and care for the partnership and the things it needs for success. This includes staff, information and people. Also, we must not forget the corollary is just as important: the operations/logistics partnership of the enemy is a target for us; we must attack it.

2. Think about the physics. Stuff is heavy, and it fills space. Anything we want to do needs to take account of the weight that will have to be moved over what distance, with what effort. Usually this all comes down to time, a delay between the idea and the act. If we think about the physics we can know the earliest time, we can finish many tasks, and we can separate the possible from the impossible. It is crucial to determine the scope of the physical logistics task early in any planning process. Planners just know how long things take and why they take that long.

3. Think about what needs to be done and when—and tell everybody. Once we have given instructions and the stuff is in the pipeline, it will fill that space until it emerges at the other end. The goal is to make sure that the stuff coming out of the pipe is exactly what is needed at that point in the operation. If it is not, then we have lost an opportunity - useless stuff is doubly useless, useless in itself and wasting space and effort and time. Moving useless stuff delays operations. Also, priority of order of arrival will change with conditions and with the nature of the force deploying. For example, the political need to show a presence quickly may lead a commander to take the risk of using the first air transport sorties to get aircraft turn-around crews and weapons into theatre before deploying all the force protection elements.

4. Think about defining useful packages of stuff. Stuff is only useful when all the pieces to complete the jigsaw are assembled. Until the last piece arrives, there is nothing but something complicated with a hole in it. It is vital to know exactly what is needed to make a useful contribution to the operational goals and to manage effort to complete unfinished jigsaws, not simply to start more. Useful stuff often has a sell-by-date. If it arrives too late, it has no value, and the effort expended has been wasted. The sell - by date must be clear to everyone who is helping build the jigsaw. And it is important to work on the right jigsaw first. In any operation, there is a need to relate stuff in the pipelines to joint operational goals, not to single- service or single-unit priorities. It is no good having all the tanks serviceable if the force can not get enough aircraft armed and ready to provide air cover or ensuring that the bomber wing gets priority at the expense of its supporting aircraft.

5. Think about what has already been started. The length of a pipeline is measured in time not distance. There will always be lag in the system, and it is important to remember what has already been set up to happen later. Constantly changing instructions can waste a lot of energy just moving stuff around for no real purpose. Poorly conceived interventions driven by narrow understanding of local and transitory pain can generate instability and failure in the system.

Group Captain David J. Foster, RAF

Reprinted with permission from AF Journal of Logistics, Vol. XXIX, No 2, Summer 2005

Mid Atlantic Logistics Committee Meeting
10 March 2007
Memorandum for the Record

Attendees:

<u>Name</u>	<u>Chapter/Org</u>	<u>Phone</u>	<u>Email</u>
Jon Buder	02 District Director	703-221-7339	jon.buder@jacobs.com
David Floyd	02-01	703-526-2437	floyd_david@bah.com
Sarah James	Exec. Dir. SOLE	301-459-8446	solehq@erols.com
A. Vic Poillucci	02-14	703-398-7181	vpoill@aol.com
Fred Kegler	02-XXX	301-862-7052	kegler_fred@bah.com
Paul Nelson	02-XXX	410-436-4575	paul.a.nelson@us.army.mil
Paul Thurston	02-XXX	410-278-5554	paul.thurston1@us.army.mil
Carl Lilieberg	02-XXX	757-896-5335	Carl.j.lilieberg.iii@hampton.amsec.com

Mr. Buder stated he wanted to ensure all ideas were heard and that the future MALs were built on a fair model and all chapters would be able to participate equally over time. He stated that he envisioned the General and Technical Chair positions and responsibilities would be rotated amongst the chapters, and no chapter would repeat positions until all chapters have served as both. The discussion concluded with an agreement that whoever served as Technical would be the next MAL's General Chairman. There will be a price break benefit to SOLE members.

Ms. James stated that the Indianapolis model is a new idea and would apply well to MAL. She stated it was more of a Professional Development Forum (PDF). It was to focus on training and less on education. Mr. Buder stated that each track and event would describe a set of skills which would be taught at that session. This way, Ms. James stated, the whole session would be capable of being issued Continuous Learning points (CLPs). Mssrs. Lilieberg, Thurston, Nelson and Floyd agreed to the new model. Mr. Poillucci stated he liked the past MALs he attended and did not see anything wrong with them. The CLPs could help attendees receive a Designated Logistician or Designated Master Logistician by providing specific functional or enabling skill required for specific designations. The District Director is ultimately responsible to ensure the District Plan for a Technical Symposium is filed with the Executive Board of Directors. Chapters will be requested to draft sections for areas they will be responsible for. Final draft of the proposed Plan is targeted for 15 May 2007. The target for presentation is the EXBOD meeting scheduled for the first week in June 2007.

Chapters discussed the potential focus of the first PDF. After the following subjects were discussed the chapters tabled the discussion until next meeting, so they can provide input from their chapter members and industry as to what topics are most desirable and will be financially supported. Some potential topics proposed were:

- a. Human Systems Integration (HSI)
- b. Human Capitol Development
- c. Ethics
- d. Integrated Logistics Chain Management
- e. RFID/UID
- f. Humanitarian and Disaster Relief Logistics
- g. Emergency Development Plan
- h. Security
- i. Log 2012
- j. Logistics Transformation
- k. Organizational Change Management

Mr. Carl Lilieberg agreed to serve as Technical Chairman, PDF 08. Mr. Buder will assist him as necessary and provide District resources as needed. Mr. Nelson provided Mr. Buder with John David's books, records and a check for the balance of the MAL starter funds, in the amount of \$7,478.29, which will be used to establish the new PDF series of events and reduce financial risk of the first PDF to the chapters of District 02.

The next PDF meeting will be held the third week of April and will be announced by end of March.

ANNUAL SOLE AWARDS PROGRAM ANNOUNCEMENT

It's time to gear up for the 2007 SOLE Awards Program. All of the Award Chairs have been selected and are ready to receive your nominations. This year's awards will be presented 23-25 August at SOLE 2007, the Society's 42nd Annual International Logistics Conference & Exhibition, held at the William Penn Hotel, Pittsburgh, PA. Chapters and their Award Coordinators need to start considering potential candidates for nominations in the various logistics disciplines. The Awards Manual is available on line at the SOLE.org web page -- go to www.sole.org/downloads.asp, then click on "SOLE Administration," and select and download the file "Awards Manual 02182002.zip."

The awards to be considered this year are in the table below. (Note that the terms "Members" and "Non-Members" refer to awards eligibility.) Some awards, like the "Prize Papers Outstanding Student," are awarded by the service school in the name of the Society. Be sure to check the Awards Manual for the due date for each award. In addition, the deadline for SOLE's Scholarship Awards has been extended to 15 May 2006.

- Founders Medal (Members/Non-Members)
- Eccles Medal (Members/Non-Members)
- Armitage Medal (Members/Non-Members)
- Jack Williams Space Logistics Medal (Members/Non-Members)
- Distinguished Service Medal (Members)
- Mo Grumbine Award for Service (Members)
- Field Awards (Members/Non-Members)
- Young Logistician Award (Members)
- Logistics In the Community Award (Members)
- Scholarship Awards (Members/Non-Members)
- Doctoral Dissertation Award (Members/Non-Members)
- Prize Logistics Paper - SOLE Symposium (Members/Non-Members)
- Prize Paper - Logistics Spectrum (Members/Non-Members)
- Prize Papers - Outstanding Student (e.g., AFIT, AWC, AC&SC) (Members/Non-Members)
- Chapter Newsletter Awards (Members)
- Chapter Awards (Members)

As you can see, both members and non-members are eligible for awards. **We need your help** in nominating candidates and getting well-qualified people recognized for their outstanding contributions to the logistics profession. Please feel free to contact Dave Floyd, CPL, at (703) 526-2437 or at floyd_david@bah.com.

SOLE ANNUAL FIELD AWARD NOMINATIONS

GWAC SOLE is soliciting nominations for Logistics Teams, Contractor Teams or Individuals for the SOLE Annual Field Awards. If you know of anyone that you think is deserving of a Field Award please provide your nominations to Ron Hooks, Vice Chair of Programs for GWAC SOLE, by 10 April, 2007. Field awards are meant to recognize technical achievement and professional experience in, and contributions to, a given specialty of logistics.

Instructions:

The format and instructions are in the Awards Manual which is available on line at the SOLE.org web page -- go to www.sole.org/downloads.asp, then click on "SOLE Administration," and select and download the file "Awards Manual 02182002.zip." It is important to follow the Awards Manual Guidelines when drafting your recommendations. Contact me for examples.

Eligibility

A Field Award may be presented only to an individual or small teams of individuals. An organization, agency, or institution is not eligible. **Nominees are not required to be SOLE members.** The following are examples of award titles that nominations might be made under:

Integrated Logistics Support (ILS) - Business Logistics Management - Life Cycle Cost Management - Project Management - Financial Management - Contract Management- Supplier/Subcontractor Management - Management Information Systems - Maintenance Management - Supply Support - Support and Test Equipment - Software Support - Personnel Training - Technical Publications - Facilities - Post Production Support - Customer Service - Field Data Reporting and Analysis - System Engineering- Logistics Engineering - Reliability - Maintainability - Human Factors - Safety Engineering - Logistics Support Analysis - Economic/Cost Analysis - Operations Research/Systems Analysis - Logistics Research and Development - Purchasing - Material Flow - Production Operations - Packaging - Physical Distribution - Inventory Control - Warehousing - Transportation and Handling - International Logistics - Acquisition Logistics - Provisioning *

If a Field Award is made in the area of provisioning, it will be designated the "Maynard Roof Award in Provisioning."

The areas of logistics or fields that are provided above as examples are not intended to be all inclusive. The specific titles of Field Awards may vary somewhat from year to year because the specialty areas are related to career fields and these may change from time to time to reflect growth and shifts of emphasis in the field. The objective is to recognize outstanding contributors in logistics technical specialty areas and to designate the Field Awards in their specialty areas.

Please send me your nominations to Ron Hooks by 10 April, 2007, his contact information is hooks_dennis@bah.com or 703-526-2482.

SOLE LEF SCHOLARSHIP

Are you or your son or daughter pursuing a Bachelors or Masters degree in logistics or a logistics-related major?

Are you enrolled at an accredited educational institution, carrying a full-time course load? Then you are eligible to apply for a \$1,000 scholarship from the Logistics Education Foundation (LEF).

Each year the LEF awards a number of scholarships supporting logistics study at the undergraduate and graduate levels. Applicants are evaluated based on their intention to pursue a career related to logistics, scholastic achievements, as well as indications of current and future contributions to the logistics profession, as evidenced by course work, special projects, research, and on-the-job logistics experience.

For more information on the LEF, and to download the scholarship application package, go to the following Web site: <http://www.sole.org/lef.asp>.

Contact Dave Floyd, CPL, Chapter Chair, prior to sending the application in. All scholarship award winners are required to submit a student paper to SOLE's professional journal, the *Logistics Spectrum*. You do not have to be a member of SOLE to apply.

ON A PERSONAL NOTE.....

Please send your announcements about GWAC members to be posted in "On a Personal Note...." to floyd_david@bah.com.

ROBO MOM

Mary Johnston, ICF International, GWAC VP Admin, & Jenny's Mom, has returned to work supporting the FAA after double knee replacement. When asked if she had any comments about the surgery she said "I am kicking myself for waiting so long to have the surgery just like everyone told me I would be".

RIGHT, WRIGHT

For those of you who remember Elizabeth Wright, she was GWAC membership chairman for a number of years. She recently returned from Texas where she worked in support of FEMA on the KATRINA effort.

TREND-SETTING

B.J.Silvey, GWAC VP Finance, Col., USA, (retired), is having his second knee replacement at Georgetown University Hospital in March.

CPL EXAM PROCTOR

Gary Glick, CPL has left the Missile Defense Agency and his new email address is now glick.g@starpower.net

BAIT and SWITCH

After leaving TSA for less than a one month stint at the Department of Energy, Lyle Paulson, CPL, the Immediate Past Chair of GWAC and the SOLE BoD VP for Member Services, is now back at TSA in a new position with new customers much to the chagrin of GWAC Management Team members who had just updated his POC info.

FEBRUARY LUNCHEON

GWAC joined the DC Chapter of Engineers and Architects Societies (DCCEAS) at the Pier 7 Restaurant in Washington, DC on 21 February for a luncheon to celebrate National Engineers' Week. The guest speaker was Dr. Mark McHenry, President Shared Spectrum Company. The topic was Next Generation (NX) Dynamic Spectrum Sharing Radios. Below is a group photo of the GWAC attendees.



GWAC CHAPTER NOMINATIONS

That time of the year is approaching soon – nomination of the new GWAC Management Committee for the next operating year. Here’s a timeline extract from the GWAC Policies and Procedures concerning BoD Elections. Think it over and if you are interested, submit your name and bio to the chapter ASAP. Make a difference and run for the BoD.

NOMINATIONS COMMITTEE CHAIR:

Activate the Nominations Committee. Collect from present board members names of recommended replacements.	February Meeting
Develop nomination list.	March
Verify and screen list of candidates.	March
Prepare final list for Board approval.	April Meeting
Convey approved list and biographies to the Elections Committee Chairman.	April

ELECTIONS COMMITTEE CHAIR:

Activate the Elections Committee.	March
Prepare ballots.	April
Receive approved list and biographies from the Nominations Committee Chairman.	April
Submit ballots and biographies for the May ORACLE.	April
Collect executed ballots at luncheons.	May and June
Collect executed mail-in ballots.	June
Assess validity of ballots.	June
Tally ballots and announce successful candidates.	June
Notify SOLE Executive Director and District Director.	NLT 15 days after luncheon
Convey sealed ballots to incumbent Vice Chair- Admin	June Luncheon

CHAPTER CHAIR:

Convene special Board meeting to break ties.	NLT 1 wk after June Luncheon
--	------------------------------

VICE CHAIR ADMINISTRATION:

Prepare notice of election schedule for the April ORACLE.	February
Receive sealed ballots from Elections Committee Chair.	June Luncheon
Destroy sealed ballots	31 days after receipt



SOLE - The International Society of Logistics
Greater Washington Area Chapter
Notional 2007-2008 Election Ballot



Membership

Number:

Signature:

Date:

(Required for vote to count)

CHAIR

Vote (‘X’) for one (1)

David Floyd, CPL

VICE CHAIRS

ADMINISTRATION
VOTE (‘X’) for one (1)

Mary Johnston

MEMBER SERVICES
VOTE (‘X’) for one (1)

Tom Griffiths

FINANCE
VOTE (‘X’) for one (1)

Lorenzo Thomas

PROGRAMS
Vote (‘X’) for one (1)

Ron Hooks

PROFESSIONAL AND TECHNICAL DEVELOPL-
MENT Vote (‘X’) for one (1)

Management Team Advisors

Vote (‘X’) for four (4)

(circle two for two-year term)

Joyce McCallister, CPL

Richmond Miller, CPL

Ken Gary (on two-year term)

Dev Raheja



*Please Join the
Greater Washington Area Chapter (GWAC) of
SOLE – The International Society of Logistics*

On Wednesday, March 28, 2007

**at Logistics Management Institute,
2000 Corporate Ridge, McLean, VA**

From 11:30 am - 1:00 pm

for a

pay as you go Café lunch or brown bag option and talk on

An Introduction to Readiness Based Sparing

by

Mr. Rob Kline and Dave Peterson, LMI

This presentation describes how readiness-based sparing (RBS) Models can help logisticians to effectively address logistical and operational uncertainties when answering a fundamental inventory management question. What spares are required to ensure my system's future operation? Real-life examples will be used to illustrate RBS applications for an existing system and developing fly-away spares kits to sustain deployed systems. LMI's Aircraft Sustainability Model™ will be used to illustrate these applications.

Rob Kline has more than 20 years' experience in systems modeling, operations analysis, and computer programming. He is one of the principal developers of the LMI Aircraft Sustainability Model (ASM), a mathematical model that relates system readiness to funding for procuring spares.

Dave Peterson's logistics career includes assignments as a USAF supply officer, a graduate-level logistics educator, and policy analyst/project manager at the senior staff level. Over the past 7 years, his consulting experience has included: reparable inventory management, identification of critical A&D industrial base logistical infrastructure, strategic materiel sourcing, and aviation operating and support cost database management.

RSVP to bunnystreet@yahoo.com

Directions to the Logistics Management Institute

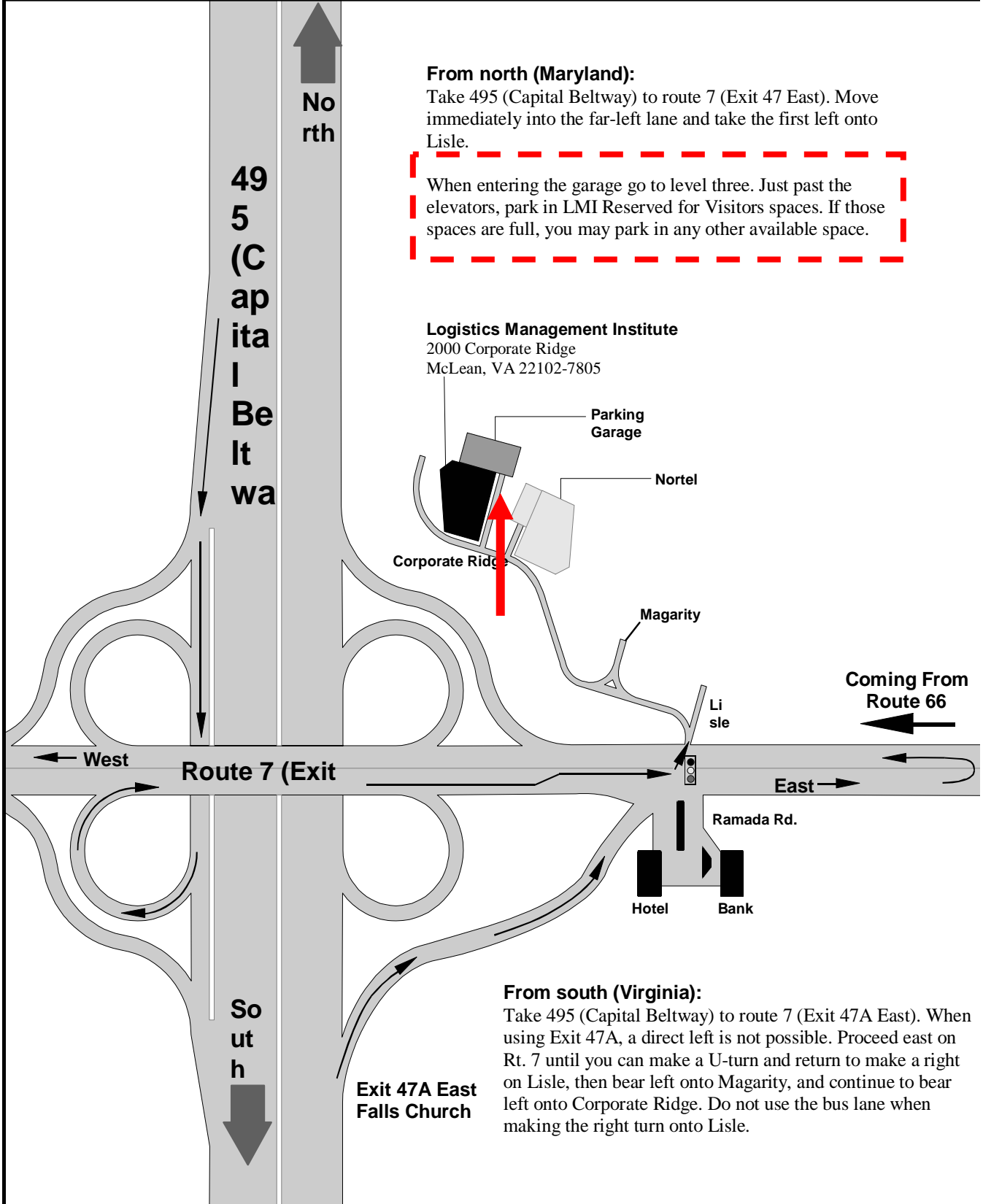
From north (Maryland):

Take 495 (Capital Beltway) to route 7 (Exit 47 East). Move immediately into the far-left lane and take the first left onto Lisle.

When entering the garage go to level three. Just past the elevators, park in LMI Reserved for Visitors spaces. If those spaces are full, you may park in any other available space.

Logistics Management Institute

2000 Corporate Ridge
McLean, VA 22102-7805



From south (Virginia):

Take 495 (Capital Beltway) to route 7 (Exit 47A East). When using Exit 47A, a direct left is not possible. Proceed east on Rt. 7 until you can make a U-turn and return to make a right on Lisle, then bear left onto Magarity, and continue to bear left onto Corporate Ridge. Do not use the bus lane when making the right turn onto Lisle.